

# New Zealand Surf Boat Series

Capital Classic - Lyall Bay





# ENTRY INFORMATION

## Competition Purpose:

The New Zealand Surf Boat Series is an action packed series of events held at key competitions throughout the season and is designed to celebrate the comradery and competition of Surf Boats while finding the most committed and consistent crews.

## Events:

Capital Coast Classic	Saturday December 11	Lyall Bay
Central Region Championships	Saturday January 8	Waimarama
Eastern Region Championships	Saturday January 29	Mt Maunganui
North Island Championships	Saturday February 5	Waihi

## Entry Information:

Crews must enter each competition that they intend to compete in via the SLSNZ Online Entry System. Clubs have access to this system and will process your entries.

Crews are automatically included in the Surf Boat Series by entering any two of the respective events that make up the series.

There are no additional fees for the Surf Boat Series beyond what is charged to enter each of the respective events.

Entry information for each event can be found [here](#):

## Rules & Regulations:

Each event will be conducted under the rules & regulations contained in the documents listed below, however, given that each event will be run in different conditions and under the guidance of different Event Management Committees, there may be variations to programming and application of those stated rules & regulations.

**[SLSNZ Competition Manual](#)**, including any additional amendments as detailed on the website and any additional requirements as communicated by the Event Management Committee.



# ENTRY INFORMATION

Additionally members entering events are bound by the following rules, which can be found on the SLSNZ website:

- [SLSNZ Constitution](#)
- [SLSNZ Regulations](#)
- [SLSNZ Code of Conduct](#) (Note: The Event Management Committee reserve the right to exclude competitors from further competition for poor or 'un-sportsman like' behaviour. This also applies to parents, managers and supporters)
- [Drug Free Sport New Zealand](#)
- [SLSNZ Sport Policies](#)

## Age Groups:

The following age groups will be racing for series points:

- Masters Men & Women
- Open Men & Women
- U23 Men & Women
- U19 Men & Women

Age groups are determined by the competitor's age at midnight on 30<sup>th</sup> September 2021. For example, if you were 19 on the 30<sup>th</sup> September 2021, you are not eligible to compete in the Under 19 division.

Age groups will be consolidated to ensure heats have a greater number of participants. E.g. Masters Men & Open Men will race together if numbers allow.

## Series Points:

Points will be determined based on the results from each of the individual events that make up the series.

Crews must attend minimum of two events to be eligible to accrue points towards the series.

The highest number of points accrued from up to any of three events will be used to determine overall rankings.

Points will be allocated as follows:

- Finals = 1st = 20, 2nd = 18, 3rd = 16, 4th = 14, 5th = 12, 6th = 10
- Semi Finals (if 6 in each semi) = 4th in either semi = 9, 5th = 8, 6th = 7
- Placings after rounds = 13th = 6 all the way down to 18th getting 1 point

In the case of a tie at the end of the series, final places will be determined by/in order of:

- i. Placing count back from each event (most first places = higher placing)
- ii. Placing count back from each round (worst result = lower placing)
- iii. The crew that has the best result at the North Island Surf Boats round of the series will be declared the higher placing.

# ENTRY INFORMATION

## Event Programme:

Officials Meeting: 0900

Sweeps Meeting: 0930

First Gun: 1000

<b>Surf Boat Arena Long Course</b>
<b>Saturday 11th December</b>
Open & Masters M Rnd 1
Open W Rnd 1
U23 M Rnd 1
U23 W Rnd 1
U19 M Rnd 1
U19 W Rnd 1
<b>Break</b>
Open & Masters M Rnd 2
Open W Rnd 2
U23 M Rnd 2
U23 W Rnd 2
U19 M Rnd 2
U19 W Rnd 2
<b>Break</b>
Open & Masters M Rnd 3
Open W Rnd 3
U23 M Rnd 3
U23 W Rnd 3
U19 M Rnd 3
U19 W Rnd 3
<b>Break</b>
Open & Masters M Rnd 4
Open W Rnd 4
U23 M Rnd 4
U23 W Rnd 4
U19 M Rnd 4
U19 W Rnd 4
<b>Break</b>
<b>U19 M Rnd 5</b>
<b>U19 W Rnd 5</b>
<b>U23 M Rnd 5</b>
<b>U23 W Rnd 5</b>
<b>Open M Rnd 5</b>
<b>Open &amp; Masters W Rnd 5</b>

<b>Surf Boat Arena Short Course</b>
<b>Sunday 12th December</b>
Round Robin R1 - Heat 1
Round Robin R1 - Heat 2
Round Robin R1 - Heat 3
Round Robin R1 - Heat 4
<b>Break</b>
Round Robin R2 - Heat 1
Round Robin R2 - Heat 2
Round Robin R2 - Heat 3
Round Robin R2 - Heat 4
<b>Break</b>
Round Robin R3 - Heat 1
Round Robin R3 - Heat 2
Round Robin R3 - Heat 3
Round Robin R3 - Heat 4
<b>Break</b>
D - Final
C - Final
B - Final
A - Final

# ENTRY INFORMATION

## Site Map:

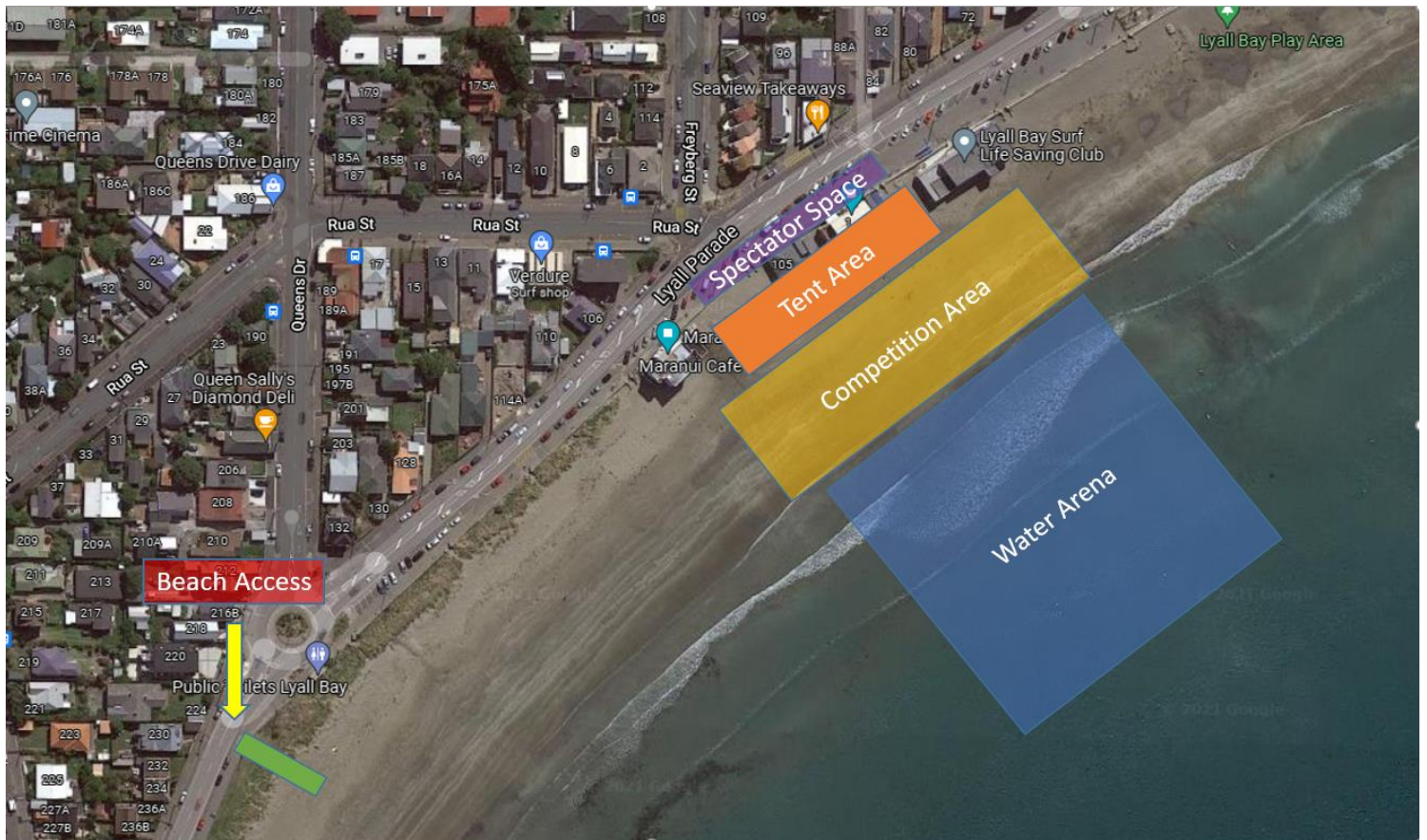
The site set up for the Lyall Bay competition will be as follows.

Crews will be required to bring their boat onto the beach using the western entrance beach access, cars are not permitted to stay on the beach and will need to park on the road. There will be no tractors for this event.

Vehicles using the beach access will need 4WD.

The competition area will be situated between Maranui SLSC & Lyall Bay SLSC. Club Tents must be between these two buildings to help clearly define the COVID – 19 competition area.

Only competitors, managers, event staff and officials are allowed within the tent/competition area, and will have wristbands. This is detailed below.





# ENTRY INFORMATION

## COVID 19 – Vaccination Verification & Processing:

The Wellington region is currently in “Orange” under the new COVID – 19 Protection Framework. Whilst at this restriction level, the Capital Classic Surf Boat event will operate as a “Fully Vaccinated” event, allowing us to operate with more flexibility.

SLSNZ is currently in the process of collecting members COVID – 19 vaccination information, but due to the large number of members being processed this is unlikely to be ready by the date of this event.

Please be mindful that this process will change over the course of the next couple of months, but in the interim we will proceed with the following:

All competitors, managers & officials wishing to attend this event must be double vaccinated to attend this event.

We will not be verifying the vaccination status of spectators at this event as the spectator areas will be classified as a “public space”, which is outside the jurisdiction of the event.

Clubs will fill out an attached spreadsheet, which will highlight the need for the club to verify each member’s vaccination status. We will not require copies of their COVID – 19 Passport at this stage due to timing issues. We are relying on clubs to sight these documents and confirm with the event manager that all attending members from their club are vaccinated.

This process will be superseded by the EnterNow system in the future.

It is expected that clubs have a reasonable idea of their competitor base and vaccination status thus the need to collect this from the membership will lead to double handling.

This information will be due on Wednesday 8<sup>th</sup> December 2021.

Any members within the competition space will require a wristband. These will be given out to all confirmed vaccinated members. Team managers will be able to collect these from the administration team on the morning of the event.

## Key Contacts:

If you have any queries or concerns regarding a specific event, contact the Event Manager for that particular event. For any queries regarding the Surf Boat Series, contact:

### **Lewis McClintock**

National Sport Manager

Surf Life Saving New Zealand

[Lewis.mcclintock@surflifesaving.org.nz](mailto:Lewis.mcclintock@surflifesaving.org.nz)

### **Troy Greenem**

Regional Sport Manager – Central

Surf Lifesaving New Zealand

[Troy.greenem@surflifesaving.org.nz](mailto:Troy.greenem@surflifesaving.org.nz)