



**SURF LIFE SAVING®**  
NEW ZEALAND  
*In it for life*



## Capital Coast

# White Horse #1 – Petone – Craft Only

**Date:** Sunday 14<sup>th</sup> November 2020

**Venue:** Petone foreshore, opposite Beach Street. See map below.

**Entries close:** Wednesday 10<sup>th</sup> November

Kia Ora Senior Surf,

Please read the important information regarding the 2021/2022 Capital Coast Senior Surf Sport Season:

### **Programme:**

All programme information and event time will be posted on the [SLSNZ Calendar](#). Each event will have its own page that will be updated regularly building up to it.

<b>Surf Officials Meeting:</b>	8.00am on beach
<b>Team Managers Meeting:</b>	8.15am on beach
<b>Racing Starts:</b>	8.30am

### **Event Entries:**

For the events this season, we will again be using the online event entry system [Enter NOW](#).

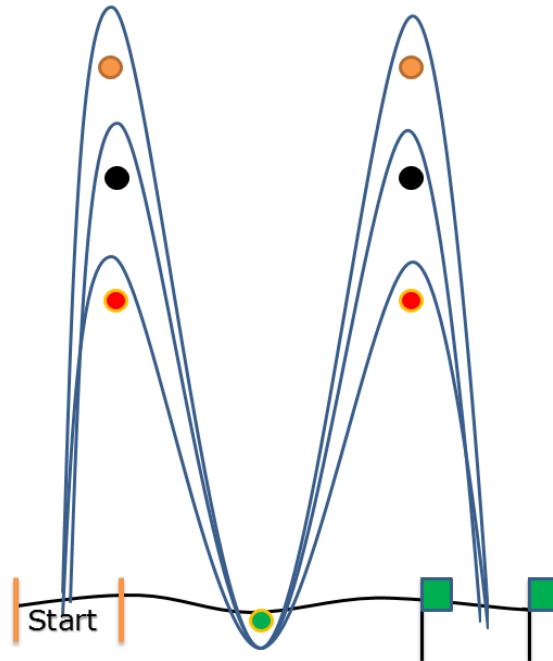
**Entries will close at 8am on the Wednesday prior to events, any late entries will incur a fee of \$15 on top of the normal entry fee**

### **Programme:**

- Board races x 2
- Ski races x 2
- Surf race x 1
- Double Ski x 1

Board, Ski and Swim races will be on an M shape course. The seaward turning buoys will be set at the distance as specified in the Surf Sport Competition Manual. The shore turning marker will be in shallow water and will require dismount from your board or ski.

Double Ski will race the normal long course configuration.



### **Competition Divisions:**

A Competitor's division will be determined by their gender and their age on 30 September annually for the current competition season.

- Each competitor will need to be entered into the races they want to do. (i.e. Joe Blogs – U15 Male board, U17 Male ski)
- A competitor can only compete in 1 age group for each discipline as well as Open. (i.e. an under 17 athlete can do either the U17 board or the U19 board but not both) Open events for the Whitehorse series are an exclusion to this rule.
- There will be no entering into races on the day.

### **Event Entry Website:**

<http://slnz.enternow.co.nz/slnz/>

If your club doesn't currently have access to the EnterNOW system, please contact [troy.greenem@surflifesaving.org.nz](mailto:troy.greenem@surflifesaving.org.nz)

### **Officials:**

This year we will again have the **SLSNZ Surf Official Policy** in place. All clubs will need to provide one qualified surf official for every 10 athletes competing. More information can be found in policies [SPS001](#) and [SPS002](#).

### **Whitehorse Series Points:**

Points from each event will count towards the Whitehorse Trophy for top Senior Competition Club (including all individual and team events).

Points for individual and team events are:

- 1st = 3 Points
- 2nd = 2 Points
- 3rd = 1 Point

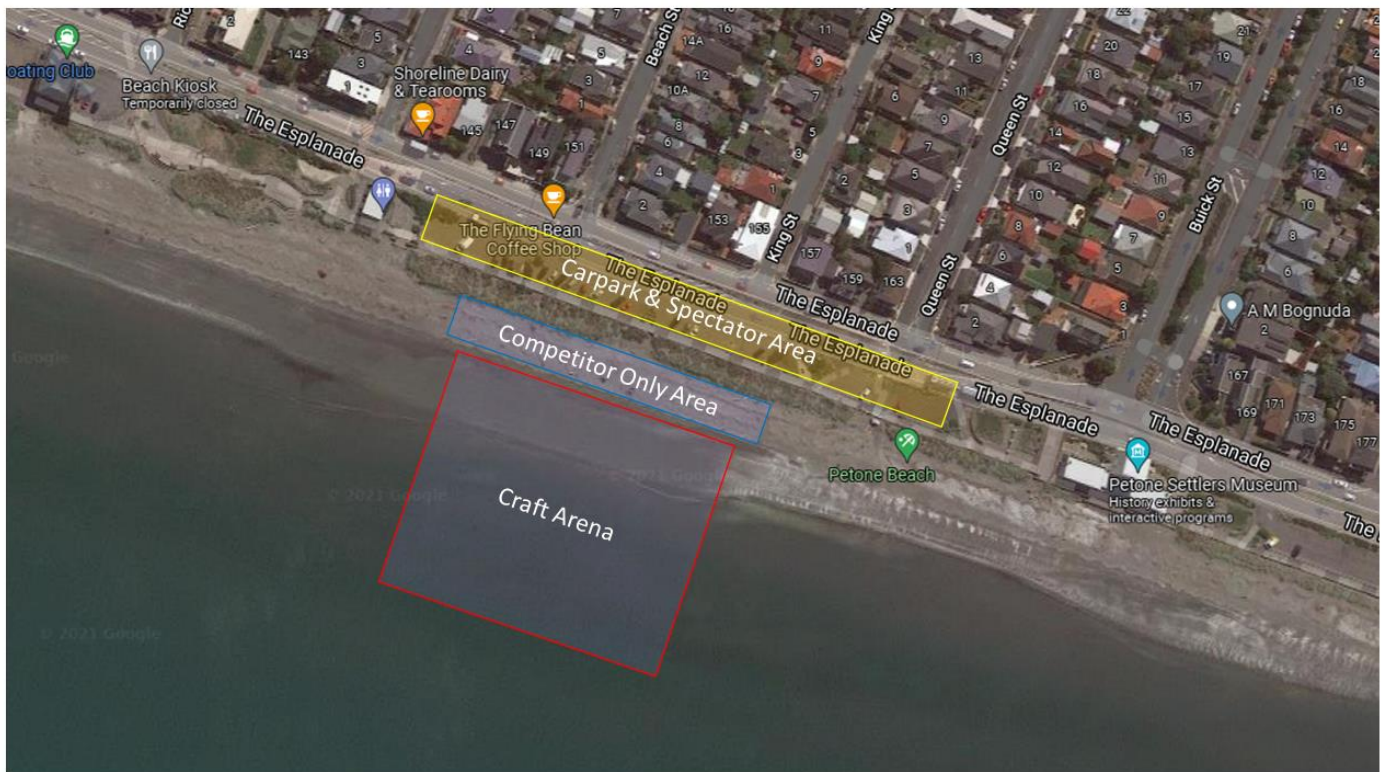
## **COVID 19 - Parking and Beach access:**

Parking will be in the public carpark along the foreshore. Parking space will be limited so please make sure you are there early with your trailers to get a park. Access to the carpark is only available when you are heading west along The Esplanade.

The carpark space will be the only area for spectators to watch the event, only athletes, coaches and managers will be able to access the competition area.

Clubs will only be allowed 4 members to accompany athletes into the competition area

This will be clearly defined & QR Codes present.



# **CONTACT**

**Troy Greenem** – Sports Manager – Central Region  
M | 027 840 7322  
E | [troy.greenem@surflifesaving.org.nz](mailto:troy.greenem@surflifesaving.org.nz)

**Surf Life Saving New Zealand – Central Region** - Pelorus Trust Sports House, 93 Hutt Park Road, Seaview, Lower Hutt, Wellington 5010, PO Box 39129, Wellington Mail Centre, Lower Hutt 5045.

