



Capital Coast Junior Championships 2021

Date: Sunday 14th February 2021
Venue: Lyall Bay - see map below.
Entries close: Wednesday 10th February
Cost: \$5 per competitor

Late entries \$15 per competitor on top of normal entry fee.
 There will be **no removal/deletion** of entries after the close of entries i.e. all entries in EnterNOW at close of entries will be charged.

Kia Ora Junior Surf,

Please read the important information regarding the 2020/2021 Capital Coast Junior Championships

Surf Officials Meeting: 8.00am on beach
Team Managers Meeting: 8.30am on beach
Racing Starts: 9.00am

Event Entries:

For the events this season, we will again be using the online event entry system [Enter NOW](#).

Entries will close at 8am on the Wednesday prior to events, any late entries will incur a fee of \$15 on top of the normal entry fee

Programme:

Surf Race	Run Wade Run
Board Race	Body Board Race
Diamond	Beach Sprint
Beach Flag	Board Relay
Body Board Relay	U10 200m Badge - Board Race
U10 200m Badge – Surf Race	U10 200m Badge – Diamond

Note: U8 – U10 athletes will use a body board for their races, unless competing in the 200m badge events.

Competition Divisions:

A Competitor's division will be determined by their gender and their age on 30th September annually for the current competition season.

- Each competitor will need to be entered into the races they want to do. (i.e. Joe Blogs – U14 Male Board, U14 Male Surf Race)
- There will be no entering into races on the day.
-

Event Entry Website:

<http://slnz.enternow.co.nz/slnz/>

If your club doesn't currently have access to the EnterNOW system, please contact troy.greenem@surflifesaving.org.nz

Officials:

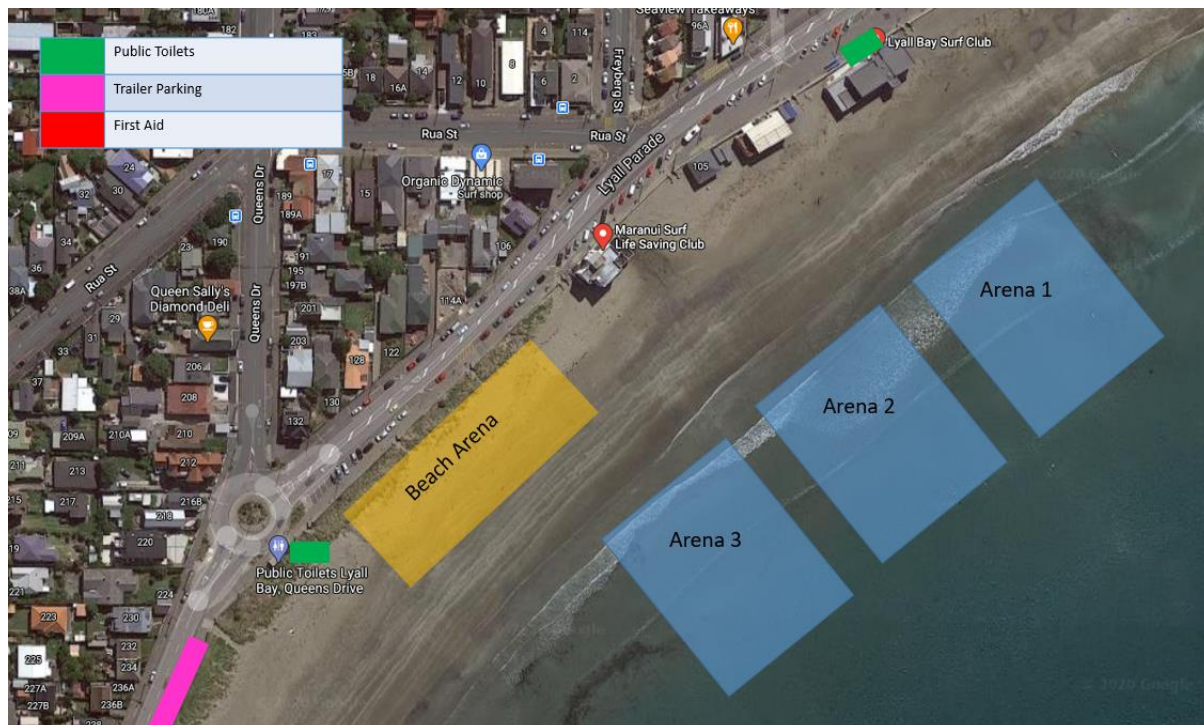
This year we will again have the **SLSNZ Surf Official Policy** in place. All clubs will need to provide one qualified surf official for every 10 athletes competing. More information can be found in policies [SPS001](#) and [SPS002](#).

Parking and Beach access:

Parking will be in the public carpark along the foreshore. Parking space will be limited so please make sure you are there early with your trailers to get a park.

Beach access for boats and canoes will be on the west end of Lyall Bay SLSC, once you have dropped your trailer please park away from the SLSC.

Please refer to the diagram below for more detail regarding arenas and parking



CONTACT

Troy Greenem – Sports Manager – Central Region
M | 027 840 7322
E | troy.greenem@surflifesaving.org.nz

Surf Life Saving New Zealand – Central Region - Pelorus Trust Sports House, 93 Hutt Park Road, Seaview, Lower Hutt, Wellington 5010, PO Box 39129, Wellington Mail Centre, Lower Hutt 5045.