



Eastland Port 2020 Champion of the Bays

Combined Gisborne and Bay Of Plenty Senior Championships

Date: Saturday 11th & Sunday 12th January 2020
Venue: Midway Beach SLSC

Event Overview

The Eastland Port 2020 Champion of the Bays competition offers almost all the events available at the 2020 NZ Championships. The event draws upon the best of the best from the Gisborne and Bay Of Plenty areas testing both their speed and endurance, to determine the 2020 Champion of the Bays.

Event Information

Registration: Event entry is via the new SLSNZ Online Entry system
<http://slnz.enternow.co.nz/slnz/>
Entries close 2:00pm Monday 30th December 2019

Entry Fee: \$30.00 inclusive of GST.

Late Entry Fee: Late entries will incur an additional \$30.00 fee

High Visibility Vests: High Visibility Vests are compulsory for all water event competitors

Racing Uniform: Club Caps are compulsory.

RFID Tags: RFID Tags are compulsory. No Tag = No Racing

Saturday 11th Jan

Officials Briefing:	7:30am	High Tide:	0653 hrs
Team Managers Briefing:	8:00am	Low Tide:	1312 hrs
Start Time:	8:30am		

Sunday 12th Jan

Officials Briefing:	7:30am	High Tide:	0751 hrs
Team Managers Briefing:	8:00am	Low Tide:	1412 hrs
Start Time:	8:30am		

Age Groups:

Standard: U16, U19 & Open
Masters (in 10 year brackets) (30-39) (40-49) & 50+



Eastland
Port

In it for life



Events

Event:	Age Group:	Gender:
Saturday 11th		
Sprint	U16, U19, Open and Masters	Male and Female
Flags	U19, Open and Masters	Male and Female
Run/Swim/Run	U16, U19, Open and Masters	Male and Female
Board Race	U16, U19, Open and Masters	Male and Female
Ski Race	U16, U19, Open and Masters	Male and Female
Diamond Race	U16	Male and Female
Ironman	U16, U19, Open and Masters	Male and Female
2km Beach Run	U16, U19, Open and Masters	Male and Female
Beach Relay	U16, U19, and Open	Male and Female
Saturday Twilight 2:30pm		
Long Course Canoe	U19 and Open	Male and Female
Short Course Canoe	U19 and Open	Male and Female
Sunday 12th		
Surf Race/Surf Team	U16, U19, and Open	Male and Female
Tube Rescue	U16, U19, and Open:4 Person	Male and Female
Board Rescue	U16, U19, and Open	Male and Female
Flags	U16	Male and Female
Double Ski	U19, and Open	Male and Female
Mixed Double Ski	Open	Mixed (1 Male and 1 Female)
Board Relay	U16, U19, and Open	Male and Female
Ski Relay	U19, and Open	Male and Female
Taplin Relay	U16, U19, and Open	Male and Female

Please note:

- The events listed are dependent upon the number of entries and surf/weather conditions.
- The rules for each of these events can be found in the Surf Sport Manual 9th Ed (v3). [Click here](#) to find these documents online.
- Please note the surf race event will be held as a combined event with the surf teams event.

Club Requirements to Provide Officials

There will be strict adherence to the Officials Ratio Policy of 1 official for every 10 club competitors. The names of your Club Officials will required via the EnterNow Online entry system. At the close of entries, if there is a shortfall of Officials, a request will go out to the Team Managers to ensure they meet their 1:10 Official to athlete ratio. Additional names must be given to the Event Manager if not. This will be enforced strictly and clubs may not be allowed to compete if their named Officials are not at the Official briefing.

Composite Teams

Where athlete numbers and field size allow, clubs may enter composite teams. For example, Wainui and Whangamata may combine its athletes to field a Taplin Relay. Composite Teams results will not count for points or medals.

Waves & RFID Tags

This event will be run using the Waves system & will require all athletes to have RFID tags.

No tags = no racing

If individuals are missing tags, please contact the Regional Sport Manager with a full list of Names and SLSNZ ID Number by the Close of Entry date.



Eastland
Port

Clashing of Events / Age Categories

To try and meet proposed programme timings we have had to implement the following:

We will not be holding events for any competitor. If your competitor is not on the line ready then they will not start in that heat, semi, or final.

U16 M & F Iron & Diamond: U16 athletes will need to choose one or the other of these events. Event timings will not allow entry into both

Individual Events: athletes may only compete in their specific age group. They will not be able to compete up for this event. For example, an U19 athlete will have to compete in the U19 age category, they will not be able to compete up in the Open age category.

Teams Events: athletes may compete up in age groups to fill team positions, however they may only compete in any team event once, ie in one age category. **The entry system cannot monitor this, we will be placing our trust in the team coaches that this will be adhered to.**

Presentations

At the end of the day's events we will be presenting medals to all 1st, 2nd, and 3rd place getters in each event that was contested. At the conclusion of the event we will be awarding medals to the overall Male and Female winners in each of the Age Categories, and the Ralph Morse Shield and the Bay of Plenty Top Club Trophy (historical trophies), Awarded to the Top Club from Gisborne and the Bay of Plenty/Coromandel respectively

Event Draws

Event heat draws will be made via the Waves iPad system as the athletes are marshalled.

Club Trailers

Club gear trailers can be parked in parking spaces designated at Churchill Park.

Notes

In the event of the poor Surf Conditions, the competition will be relocated to a more appropriate venue. All competitors will be notified through the SLSNZ Eastern Region Facebook page. [Click here](#) to view the page.

Event Manager

If you have any further enquiries, please do not hesitate to contact Mark Inglis or Renee Wikaire, Event Managers.

Mark Inglis
Sport Manager – Eastern Region
Surf Life Saving New Zealand

t 07 574 2061
m 0274 571 021
e mark.inglis@surflifesaving.org.nz

Sonia Keepa
Club Support Manager - Gisborne/Tairāwhiti
Surf Life Saving New Zealand

t 06 868 9943 Ext 725
m 021 928 301
e sonia.keepa@surflifesaving.org.nz



Eastland
Port



In it for life

Saturday, 11th January 2020

High Tide 0653 hrs

Draft Programme: Please note that this is subject to change.

Time	Women's Arena	Men's Arena
8:30am	U16 F Iron – Heats	U16 M Ironman – Heats
	U16 F Diamond– Heats	U16 M Diamond – Heats
	U19 F Iron– Heats	U19 M Ironman – Heats
	Open F Iron– Heats	Open M Ironman – Heats
	U16 F R/S/R Final	U16 M R/S/R Final
	U19 F R/S/R Final	U19 M R/S/R Final
	Open F R/S/R Final	Open M R/S/R Final
	Masters F Surf Race Final	Masters M Surf Race Final
	U16 F Board Race Heats	U16 M Board Race Heats
	U19 F Board Race Heats	U19 M Board Race Heats
	Open F Board Race Heats	Open M Board Race Heats
	U16 F Board Race Final	Masters M Board Race Final
	U19 F Board Race Final	U16 M Board Race Final
	Open F Board Race Final	U19 M Board Race Final
	Masters F Board Race Final	Open M Board Race Final
	U16 F Ski Race Heats	U16 M Ski Race Heats
	U19 F Ski Race Heats	U19 M Ski Race Heats
	Open F Ski Race Heats	Open M Ski Race Heats
	Masters F Ski Race Final	Masters M Ski Race Final
	U16 F Ski Race Final	U16 M Ski Race Final
	U19 F Ski Race Final	U19 M Ski Race Final
	Open F Ski Race Final	Open M Ski Race Final
	Masters F Iron – Final	Masters M Ironman – Final
	U16 F Iron – Final	U16 M Ironman – Final
	U16 F Diamond – Final	U16 M Diamond – Final
	U19 F Iron – Final	U19 M Ironman – Final
	Open F Iron – Final	Open M Ironman – Final
		Masters M Beach Flags
	Masters 2km Beach Run M & F – Final	Masters F Beach Flags
	Open 2km Beach Run M & F – Final	U19 Beach Flags M
	U19 2km Beach Run M & F – Final	U19 Beach Flags F
	U16 2km Beach Run M & F– Final	Open Beach Flags M
		Open Beach Flags F
	Masters F Sprints– Final	Masters Sprints M – Final
	U16 F Sprints– Heats /Final	U16 Sprints M – Heats /Final
	U19 F Sprints– Heats /Final	U19 Sprints M – Heats /Final
	Open F Sprints– Final	Open Sprints M – Final
	U16 F Beach Relay– Final	U16 Beach Relay M – Final
	U19 F Beach Relay– Final	U19 Beach Relay M – Final
	Open F Beach Relay– Final	Open Beach Relay M – Final
Medal Presentations		



Saturday approximately 2:30pm Start after completion of Water Arenas:

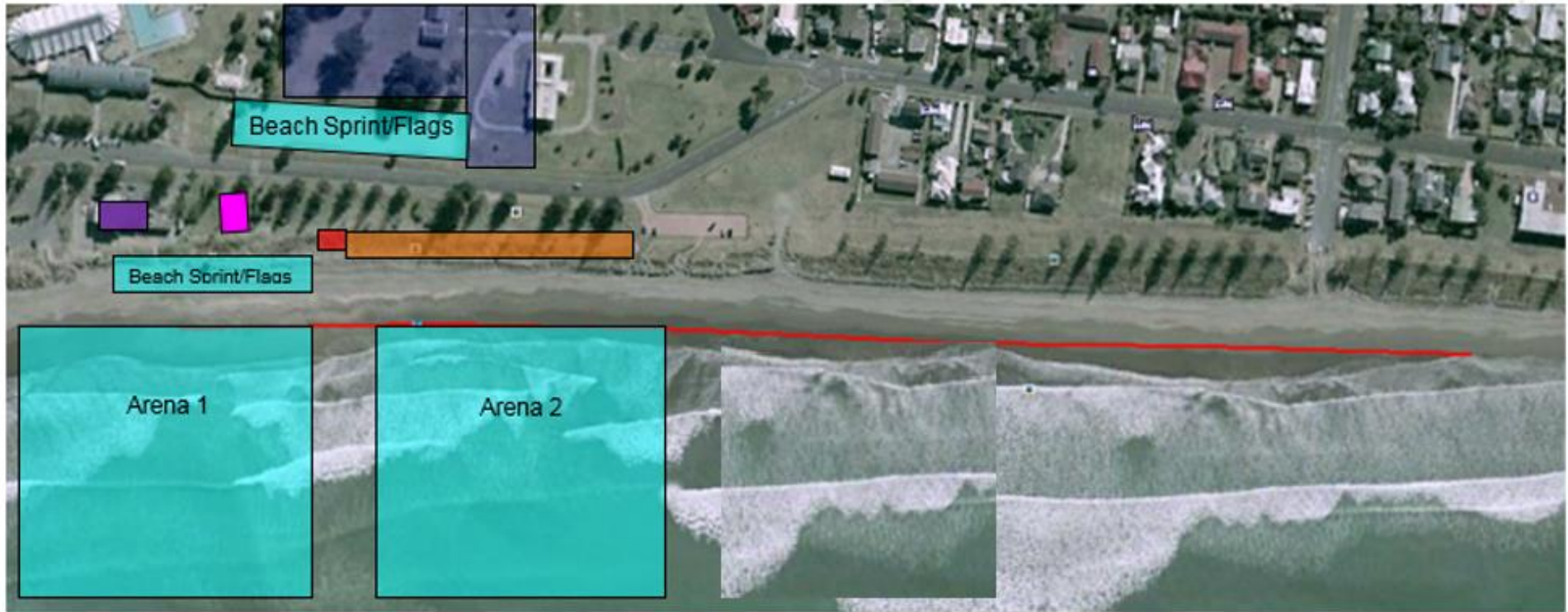
Canoe Arena
Open Long Course Canoe M –Final
Open Long Course Canoe F – Final
U19 Long Course Canoe M – Final
U19 Long Course Canoe F – Final
Open Short Course Canoe M – Final
Open Short Course Canoe F – Final
U19 Short Course Canoe M – Final
U19 Short Course Canoe F – Final
Medal Presentations



Day Two – Sunday, 12th January 2020 – Rescue / Relay Events

Time	Rescue Arena One	Rescue Arena Two
8:30am	U16 F Surf Race /Surf Teams Final	U16 M Surf Race /Surf Teams Final
	U19 F Surf Race /Surf Teams Final	U19 M Surf Race /Surf Teams Final
	Open F Surf Race /Surf Teams Final	Open M Surf Race /Surf Teams Final
	U16 Tube Rescue F – Final	U16 Tube Rescue M – Final
	U19 Tube Rescue F – Final	U19 Tube Rescue M – Final
	Open Tube Rescue F – Final	Open Tube Rescue M –Final
	U16 Board Rescue F – Heats	U16 Board Rescue M – Heats
	U19 Board Rescue F – Heats	U19 Board Rescue M – Heats
		U19 Board Rescue M – Final
	Open Board Rescue F – Final	Open Board Rescue M – Final
	U16 Board Rescue F – Finals	U16 Board Rescue M – Finals
	U19 Board Rescue F – Final	
	Flags Pit	Arena One or Two dependent on conditions
	U16 Beach Flags M	Open Mixed Double Ski – Final
		U19 Double Ski F – Final
	U16 Beach Flags F	U19 Double Ski M – Final
		Open Double Ski F – Final
		Open Double Ski M – Final
	U16 Board Relay F – Final	U16 Board Relay M – Final
	U19 Board Relay F – Final	U19 Board Relay M – Final
	Open Board Relay F – Final	Open Board Relay M – Final
	U19 Ski Relay F – Final	U19 Ski Relay M – Final
	Open Ski Relay F – Final	Open Ski Relay M – Final
	U16 Taplin Relay F – Final	U16 Taplin Relay M – Final
	U19 Taplin Relay F – Final	U19 Taplin Relay M – Final
	Open Taplin Relay F – Final	Open Taplin Relay M – Final
	Medal Presentations	Medal Presentations



Site Plan- Midway Beach



-  Food and Exhibitors
-  Competition Arenas x2
-  Churchill Park Area for Gear trailers and cars
-  Club Tents
-  First Aid
-  Event Management



Eastland
Port